

ID Card of a Standard: **API 2000**

Application:

Sizing vents of atmospheric tanks for two scenarios: Normal vent size, Emergency vent size

(These two vents can be merged if their size are not very far from each other AND they routed to a common destination.

Basics of sizing:

	Pressure	Vacuum
Normal vent	Pump-in (Fig. 1) In Breathing (Fig. 2)	Pump-out(Fig. 3) out – breathing(Fig. 4)
Emergency*	External fire pool	Not Applicable

*the emergency cases other than fire should be evaluated case – by – case by the designer

Fig. 1: Pumping-in

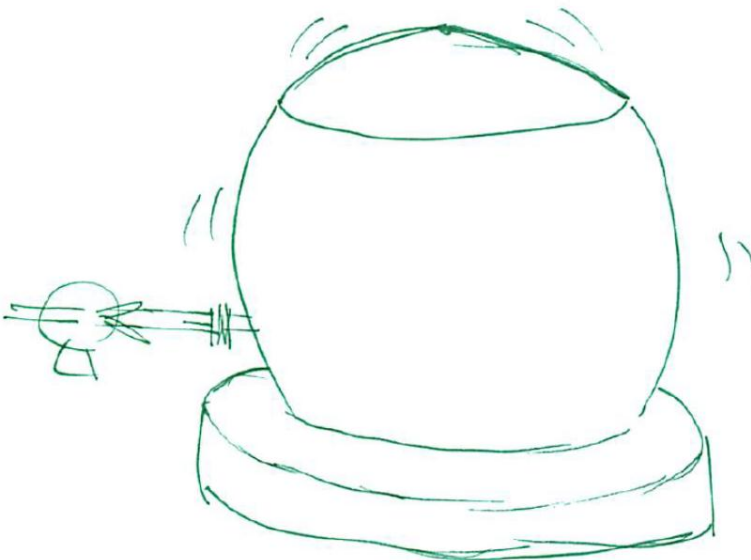


Fig. 2: In-breathing

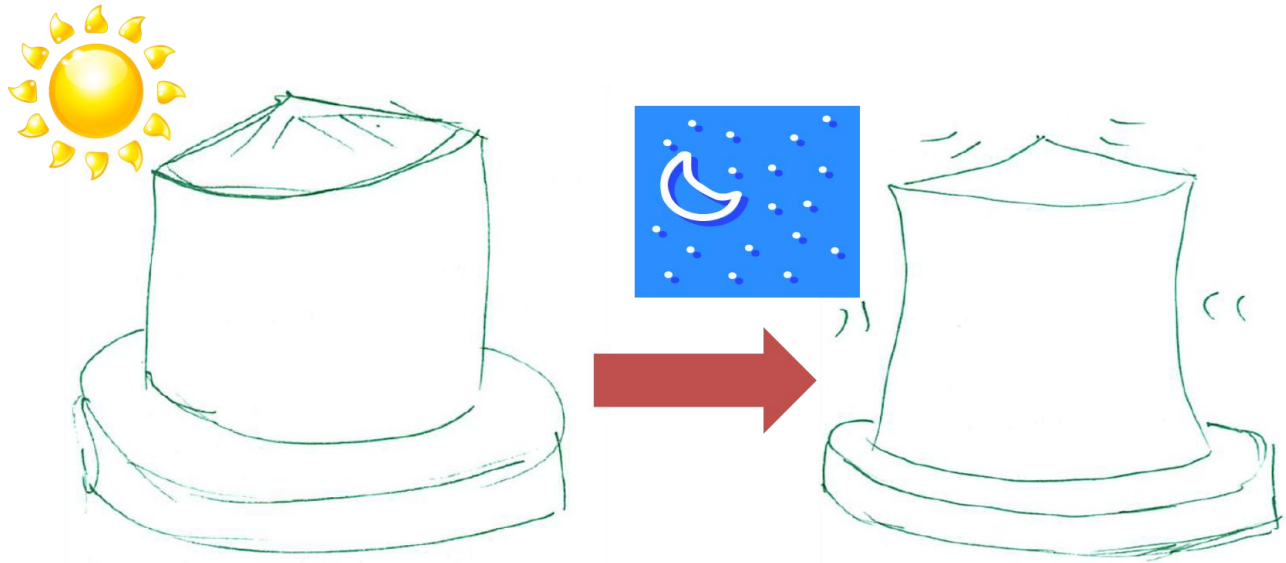


Fig. 3: Pumping-out

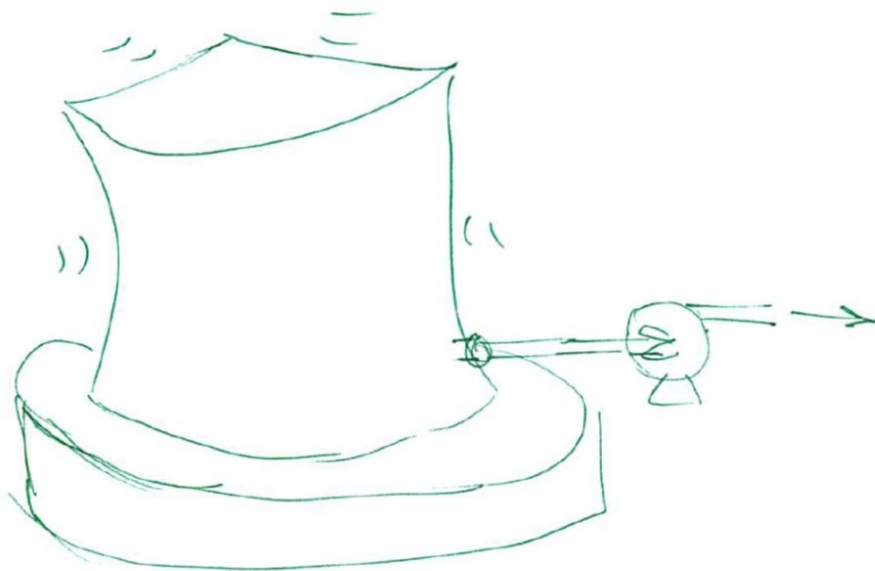
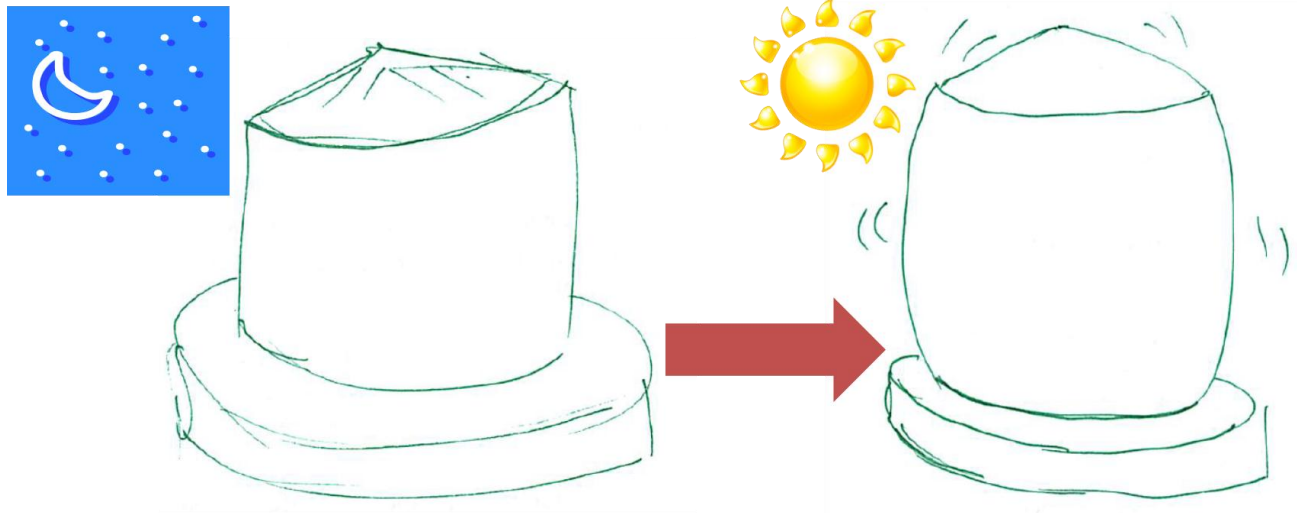


Fig. 4: Out-breathing**Which content?**

The standard was developed based on a light hydrocarbon but can be used for heavier liquids (conservative approach) like on water

Where the standard may not be suitable for using:

Very light liquids (More conservative approach should be taken)

For VRU (Vapour Recovery) system sizing (it is too conservative for such calculation)